

# CONCERT BASS ASSESSMENT

## F MAJOR

### 124. FINGER PATTERNS IN F MAJOR

**E STRING**

1 1/2 4 II 1/2 4

**A STRING**

1 1/2 4 III 4

**D STRING**

1 2 III 4

**G STRING**

1 2 III 4

(Viola-Cello)

3

### 125. F MAJOR SCALE ♩=80

Play all notes as Quarter Notes. Turn is optional.

1 4 0 1 4 0 2 4 0 2 4 -1 4 -2 4 2

1/2 III V

III 1/2

### 126. F MAJOR ARPEGGIO ♩=80

1 4 -4 1 -1 4 -4

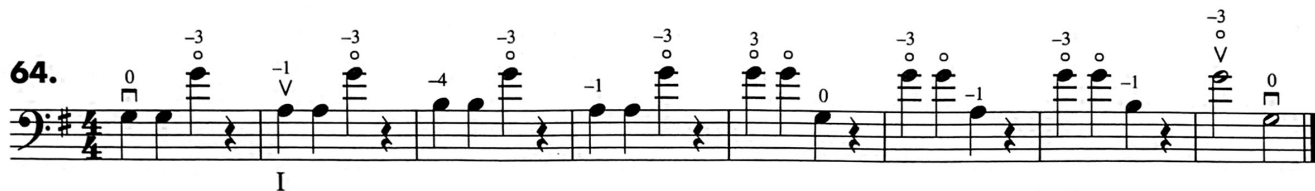
1/2 III III 1/2

A *chromatic* scale is made entirely of half steps.

### 185. Two Octave Chromatic C Scale ♩=80

2 4 0 1 0 1 -1 2 4 0 1 -1 2 4 0 1 -1 2 4 0 1 2 -1 2 4

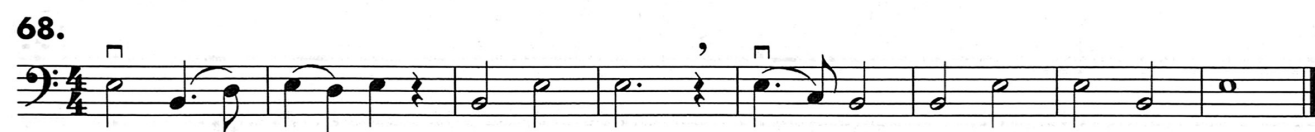
4 2 -4 2 1 0 4 -4 2 1 0 4 -4 2 1 0 4 -4 2 1 0 4 2

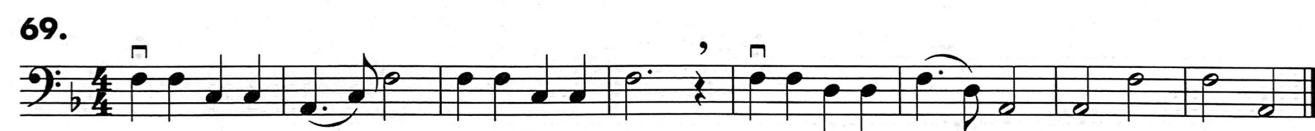
64. 

65. 

66. 

67. 

68. 

69. 

**D.S. al Fine** Play until you see the *D.S. al Fine*, then go back to the sign (§) and play until you see the word *Fine* (finish). D.S. is the Italian abbreviation for *Dal segno*, "from the sign."

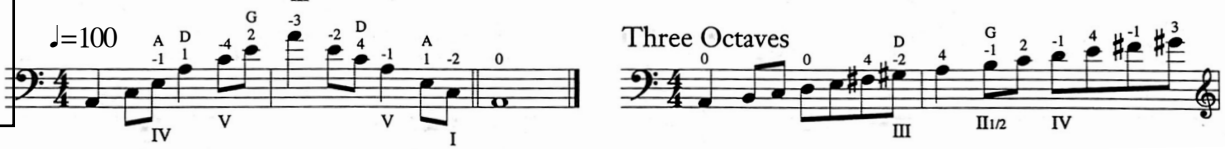
★ **70. HOME ON THE RANGE** ♩=100



# PHILHARMONIA BASS ASSESSMENT

## A Melodic Minor

### 127. Scales and Arpeggios - One Octave



Play all notes as Quarter Notes. Turn is optional.

### 2 Octave E Chromatic Slur 2 ♩=100



# Darkened Shadows Excerpt

Thursday, October 30, 2025

Start  $\text{♩} = 140$

113

*f*

*ff*

*silence*

120

*ff*

*fff*

127

*middle p*

*sffz*

*sffz*

*fp*

L.V. STOP

# CHAMBER BASS ASSESSMENT

## B Melodic Minor

Play all notes as Quarter Notes. Turn is optional. Slur 2.

### 167. Scales and Arpeggios - One Octave ♩=100



### Two Octaves



### 2 Octave E Chromatic ♩=100



# SINFONIA X

in B minor

Bassi

57 **START**  $\text{♩} = 100$

61

65 **STOP**

134  $\text{♩} = 100$  **START**

138

143

147 **STOP** *long quarter notes*

*ff* *lana*