

# CONCERT CELLO ASSESSMENT

## F MAJOR

### 124. FINGER PATTERNS IN F MAJOR

**A STRING**

**D STRING**  
First Position

**G STRING**  
First Position

**C STRING**  
First Position

(Violin-Bass)

### 125. F MAJOR SCALE $\text{♩}=80$

Play all notes as Quarter Notes. Turn is optional.

### 126. F MAJOR ARPEGGIO $\text{♩}=80$

A *chromatic* scale is made entirely of half steps.

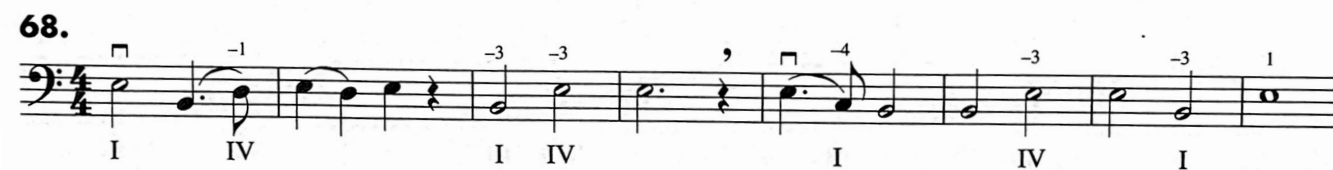
### 185. Two Octave Chromatic C Scale $\text{♩}=80$

64. 

65. 

66. 

67. 

68. 

69. 

**D.S. al Fine** Play until you see the *D.S. al Fine*, then go back to the sign (§) and play until you see the word *Fine* (finish). D.S. is the Italian abbreviation for *Dal segno*, "from the sign."

★ **70. HOME ON THE RANGE** ♩=100







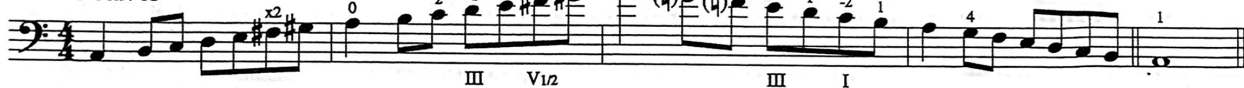
# PHILHARMONIA CELLO ASSESSMENT

## A Melodic Minor

### 127. Scales and Arpeggios - One Octave



### Two Octaves $\text{♩}=100$



### Three Octaves



Play all notes as Quarter Notes. Turn is optional.

A *chromatic* scale is made entirely of half steps.

### 185. Two Octave Chromatic C Scale Slur 2 $\text{♩}=100$



Darkened Shadows, Joshua Reznicow

Reference Recording: <https://tinyurl.com/483r634f>

Thursday, October 30, 2025

**Start**  
Opt. first stand  
♩=140  
Cello - a  
Cello - 3  
75  
80  
90  
STOP

11  
15 Bridge  
21  
ff  
sffz



## Three Octaves ♩=100

Three Octaves

1 3 4 D -1 x2 4 A -1 2 4 -1 x2 4 -1 2

II1/2 I x 1/2 IIIx

The musical score for "The Rose Tree" is presented in two systems. The first system consists of a treble clef staff and a bass clef staff. The treble staff begins with a key signature of two sharps (F# and C#) and a 3/4 time signature. It contains a series of eighth and sixteenth notes with various fret numbers (3, -1, 2, -1, 2, -1, #1, #2, 3, (h), 2, (h), 1, -2, 1, -2, 1, -3, 2, 1) and chord markings (IIIx, I, II1/2). The bass staff continues the melody with similar fret numbers and chord markings (IIIx, I, II1/2). The second system also features a treble and bass staff. The treble staff has a key signature of two sharps and a 4/4 time signature. It includes notes with fret numbers (1, -1, x4, D2, -1, 3, -Q, 2, A, 3, Q, D2, Q, -3, 1, -2) and chord markings (II1/2, IVx, A, D, IVx, II1/2). The bass staff continues the melody with fret numbers (1, -1, x4, D2, -1, 3, -Q, 2, A, 3, Q, D2, Q, -3, 1, -2) and chord markings (II1/2, IVx, II1/2).

3 Octave Chromatic  $\text{♩}=100$

The image shows a musical score for a piece titled "3 Octave Chromatic" with a tempo marking of  $\text{♩}=100$ . The score is written for two staves, both in bass clef. The key signature has one sharp (F#). The time signature is 4/4. The music is a chromatic scale spanning three octaves, starting from G2 and ending at G5. The notation includes fingerings and breath marks.

Staff 1 (top):

- Measure 1: G2, A2, B2, C3, D3, E3, F3, G3 (fingerings: 0, 1, 2, 3, -1, 2, 3, 0)
- Measure 2: A2, B2, C3, D3, E3, F3, G3, A3 (fingerings: 1, 2, 3, -1, 2, 3, 0, 1)
- Measure 3: B2, C3, D3, E3, F3, G3, A3, B3 (fingerings: 2, 3, -1, 2, 3, 0, 1, 2)
- Measure 4: C3, D3, E3, F3, G3, A3, B3, C4 (fingerings: 3, -1, 2, 3, -1, 2, 3, -1)
- Measure 5: D3, E3, F3, G3, A3, B3, C4, D4 (fingerings: 2, 3, -1, 2, 3)
- Measure 6: E3, F3, G3, A3, B3, C4, D4, E4 (fingerings: 2, 3, -1, 2, 3)

Staff 2 (bottom):

- Measure 7: F3, G3, A3, B3, C4, D4, E4, F4 (fingerings: 3, 2, 1, -3, 2, 1, -3, 2)
- Measure 8: G3, A3, B3, C4, D4, E4, F4, G4 (fingerings: 1, -3, 2, 1, -3, 2, 1, 0)
- Measure 9: A3, B3, C4, D4, E4, F4, G4, A4 (fingerings: -3, 2, 1, 0, -3, 2, 1, -3)
- Measure 10: B3, C4, D4, E4, F4, G4, A4, B4 (fingerings: 2, 1, 0, -3, 2, 1, -3, 2)
- Measure 11: C4, D4, E4, F4, G4, A4, B4, C5 (fingerings: 1, 0, -3, 2, 1, -3, 2, 1, 0)
- Measure 12: D4, E4, F4, G4, A4, B4, C5, D5 (fingerings: 1, -3, 2, 1, 0)
- Measure 13: E4, F4, G4, A4, B4, C5, D5, E5 (fingerings: 1, -3, 2, 1, 0)
- Measure 14: F4, G4, A4, B4, C5, D5, E5, F5 (fingerings: 1, -3, 2, 1, 0)
- Measure 15: G4, A4, B4, C5, D5, E5, F5, G5 (fingerings: 1, -3, 2, 1, 0)

# VIOLONCELLO SERENADE

for String Orchestra

Allegro piacevole. ♩.=72

I.

Edward Elgar, Op. 20.

*arm.*

**I.**

*fp*

**II.**

*fp*

**H**

*f*

*p* *dim.*

*sf*

*p* *dim.*

Violoncello

3

Larghetto. ♩.=72

II.

a tempo

**L** a tempo

**I.**

*ppp* *cresc.*

**START**

*ten.*

**II.**

*rf*

*f*

*p*

*p*

*un s.*

**M** con sordini

*pp*

*pp*

**STOP** *dim.*